

ZAKŁAD IZOLATORÓW ELEKTROTECHNICZNYCH
BOPLAST Sp. z o.o.

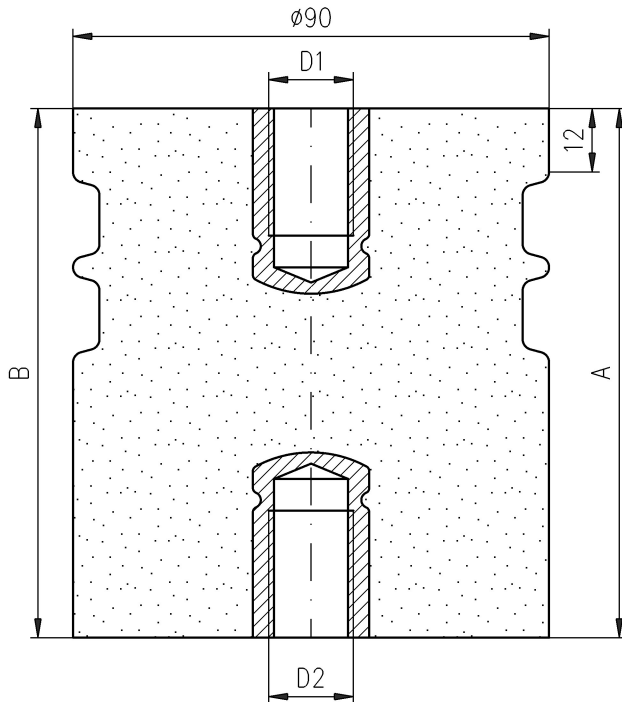
Adres:

ul. B.Krzywoustego 1,
tel. +48 59 862 01 86;
www.boplast.pl

84-300 Lębork
tel. 516 198 886
e-mail: boplast@boplast.pl

IZOLATORY WSPORCZE * IZOLATORY PRZEPUSTOWE * WYROBY IZOLACYJNE * USŁUGI

Outdoor post insulator E kV type IN15



1. Insulator material:
hydrophobic compound
2. Parameters according to PN-IEC 60273
3. Maksymalny moment dokręcania śrub:
- M10 - 30 Nm
- M16 - 120 Nm
4. Outdoor insulator

| | | | | | | | |
|-------------|-----|-----|---|-----|-----|----|--------|
| 05 | 60 | 70 | 8 | M10 | M10 | 6 | 0,8 kg |
| 04 | 100 | 110 | 8 | M16 | M16 | 10 | 1,4 kg |
| 03 | 100 | 110 | 8 | M16 | M16 | 10 | 1,4 kg |
| 02 | 60 | 70 | 8 | M16 | M16 | 6 | 0,8 kg |
| 01 | 100 | 110 | 8 | M16 | M16 | 10 | 1,4 kg |
| ver. / dim. | A | B | C | D1 | D2 | E | Weight |

| | |
|--------------------------|------|
| Rated insulation voltage | E kV |
| Bending strength Po | C kN |
| Creepage distance | B mm |

Possible to make screws according to client's requirements.