

ZAKŁAD IZOLATORÓW ELEKTROTECHNICZNYCH
BOPLAST Sp. z o.o.

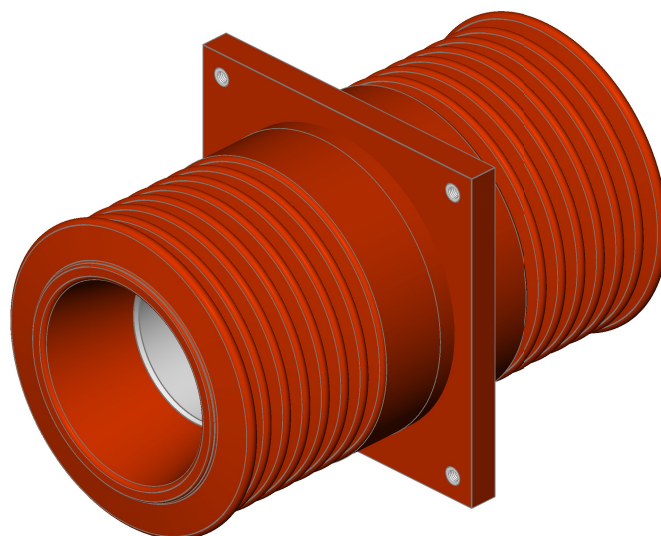
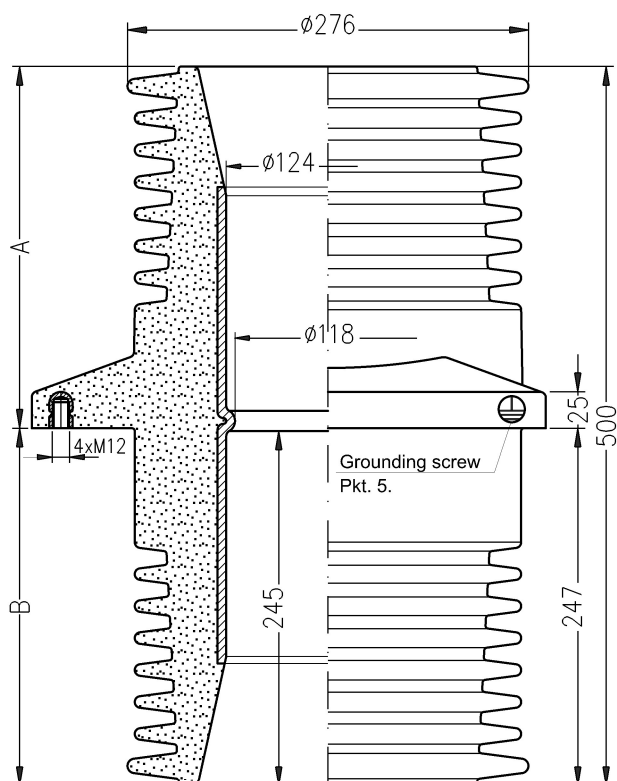
Adres:

ul. B.Krzywoustego 1,
tel. +48 59 862 01 86;
www.boplast.pl

84-300 Lębork
tel. 516 198 886
e-mail: boplast@boplast.pl

IZOLATORY WSPORCZE * IZOLATORY PRZEPUSTOWE * WYROBY IZOLACYJNE * USŁUGI

Bushing insulator 36 kV type SPWSG.bp1-16/36/1,25



1. Insulator material:
epoxy compound
2. Voltage, temperature and short circuit requirements
according to PN-EN 60137
3. Voltage requirements according to GOST 1516.1-76
4. Max screw tightening torque:
- M12 - 50 Nm
4. Indoor insulator

	PN	GOST
Rated insulation voltage	36 kV	35 kV
Lighting impulse withstand voltage	170 kV	190 kV
Dry withstand alternate voltage (50Hz, 1 min)	70 kV	95 kV
Rated current	1250 A	
Bending strength Po	16 kN	
Creepage distance	A	525 mm
	B	510 mm
Weight	32 kg	

1. Insulator is mounted to subsoil (wall, partition) using four M12 screws.
2. Centricity of current rails in relation to the opening of insulator provide upper and lower inserts.
3. Inserts are not included with insulator. They should be ordered separately.
4. Inserts are made according to client's specified requirements.
5. Insulator grounding should be connected with screw located at grounding mark.

All data can be changed due to technological progress

DT BP.3.103.07 z dnia 25.05.2018

Order example:

Bushing insulator SPWSG.bp1-16/36/1,25. Please specify the rail dimensions in the order.