

ZAKŁAD IZOLATORÓW ELEKTROTECHNICZNYCH BOPLAST Sp. z o.o.

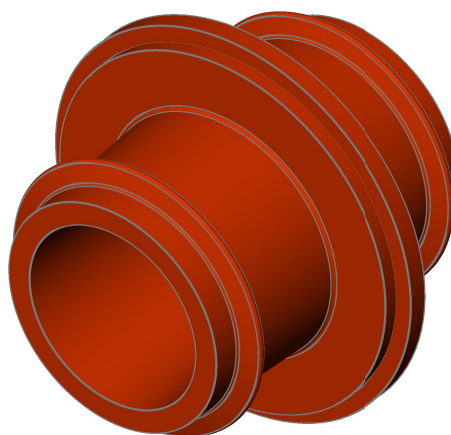
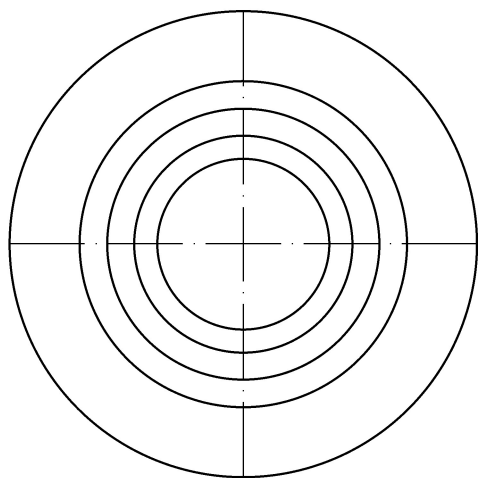
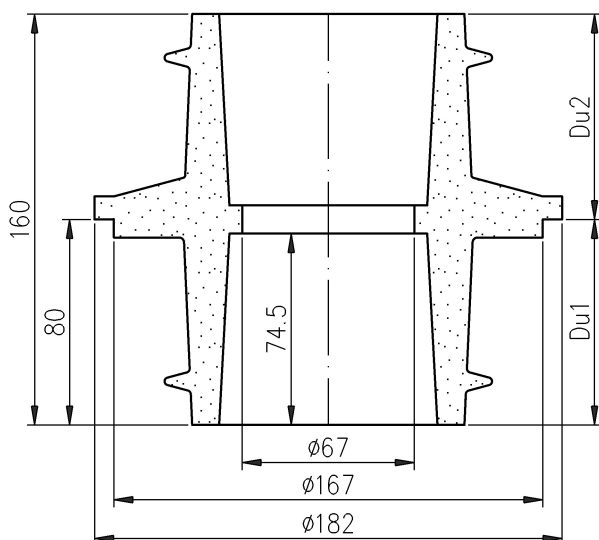
Adres:

ul. B.Krzywoustego 1,
tel. +48 59 862 01 86;
www.boplast.pl

84-300 Łęborg
tel. 516 198 886
e-mail: boplast@boplast.pl

IZOLATORY WSPORCZE * IZOLATORY PRZEPUSTOWE * WYROBY IZOLACYJNE * USŁUGI

Bushing insulator 12 kV type SPWSG.bp1-20/12/1250.01

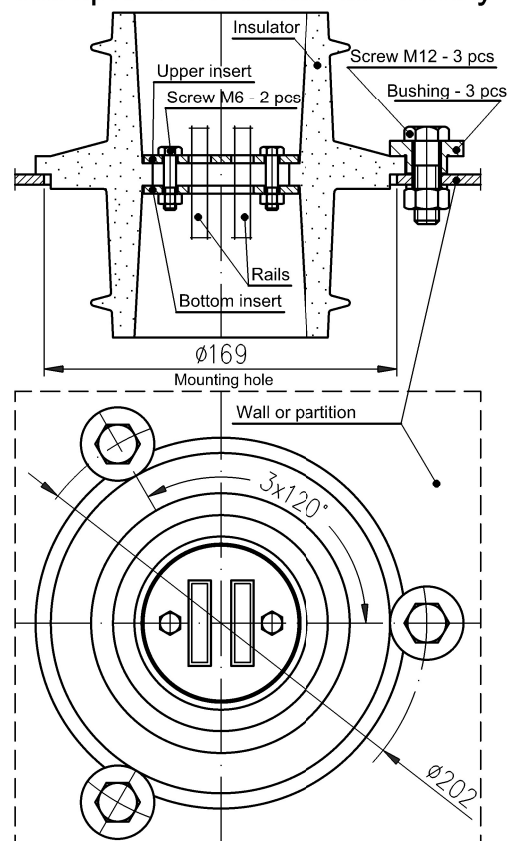


1. Insulator material:
epoxy compound
2. Voltage, temperature and short circuit requirements
according to PN-EN 60137
3. Indoor insulator

Rated insulation voltage	12 kV
Lighting impulse withstand voltage	75 kV
Dry withstand alternate voltage (50Hz, 1 min)	28 kV
Rated current	1250 A
Bending strength Po	20 kN
Creepage distance	Du1 121 mm
	Du2 123 mm
Weight	1,9 kg

1. Insulator is mounted to subsoil (wall, partition)
using three bushings and M12 screws.
2. Bushings are included in the package.
3. Centricity of current rails in relation to the opening of insulator provide
upper and lower inserts. The inserts are fitted to insulator using two M6 screws.
4. Inserts, screws M6 and M12 are not included in the package.
5. Inserts are made according to client's specified requirements.

Example of insulator assembly



All data can be changed due to technological progress

DT BP.3.101 z dnia 07.11.2008

Order example:

Bushing insulator SPWSG.bp1-20/12/1250.01