

ZAKŁAD IZOLATORÓW ELEKTROTECHNICZNYCH
BOPLAST Sp. z o.o.

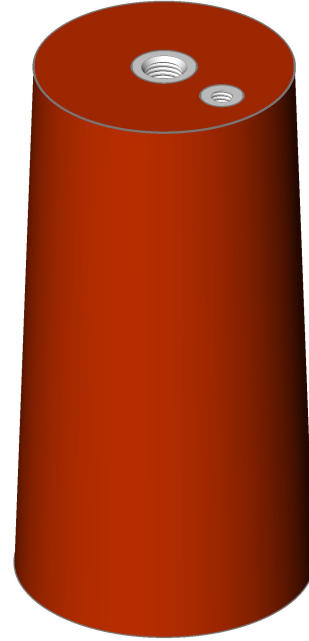
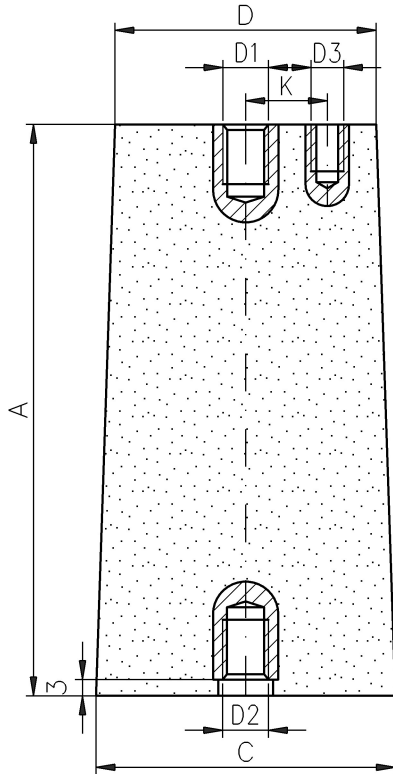
Adres:

ul. B.Krzywoustego 1,
tel. +48 59 862 01 86;
www.boplast.pl

84-300 Lębork
tel. 516 198 886
e-mail: boplast@boplast.pl

IZOLATORY WSPORCZE * IZOLATORY PRZEPUSTOWE * WYROBY IZOLACYJNE * USŁUGI

Post insulator E kV type OW3.bp1



Rated insulation voltage	E kV
Lightning impulse withstand voltage	F kV
Dry withstand alternate voltage (50Hz, 1 min)	G kV
Bending strength Po	H kN
Creepage distance	B mm

- Insulator material:
epoxy compound
- Parameters according to PN-IEC 60273
- Tested according to PN-EN 60660
- Max screw tightening torque:
 - M5 - 5 Nm
 - M8 - 20 Nm
 - M10 - 30 Nm
 - M12 - 50 Nm
 - M16 - 120 Nm
- Indoor insulator

14	100	100	Ø55	Ø48	M10	M10	-	7,2	60	28	4	-	0,4 kg
13	172	172	Ø68	Ø50	M12	M16	M5	17,5	95	50	4	15	0,9 kg
12	160	160	Ø55	Ø45	M8	M12	-	12	75	38	4	-	0,8 kg
11	175	175	Ø69	Ø50	M8	M8	-	17,5	95	50	4	-	0,9 kg
10	300	300	Ø70	Ø45	M12	M16	-	36	170	70	2	-	1,6 kg
09	300	300	Ø70	Ø45	M12	M12	-	36	170	70	2	-	1,6 kg
08	300	300	Ø70	Ø45	M5	M12	-	36	170	70	2	-	1,6 kg
07	210	210	Ø56	Ø40	M12	M12	-	24	125	50	2	-	0,9 kg
06	210	210	Ø50	Ø40	M5	M12	-	24	125	50	2	-	0,9 kg
05	175	175	Ø69	Ø50	M12	M16	-	17,5	95	50	4	-	0,9 kg
04	160	160	Ø55	Ø45	M12	M16	-	12	75	38	4	-	0,8 kg
03	105	105	Ø55	Ø48,5	M12	M16	-	7,2	60	28	4	-	0,4 kg
02	100	100	Ø55	Ø48,5	M12	M12	-	7,2	60	28	4	-	0,4 kg
01	48	48	Ø48	Ø40	M10	M10	-	3	60	28	4	-	0,2 kg
ver. dim.	A	B	C	D	D1	D2	D3	E	F	G	H	K	Weight

Possible to make screws according to client's requirements.

All data can be changed due to technological progress

DT B11.4.C03; IW-1-017-002; OM-5-017-000 z dnia 20.04.2007

Order example:

Post insulator 24 kV; type OW3.bp1.07 with M12/M12 screws.