

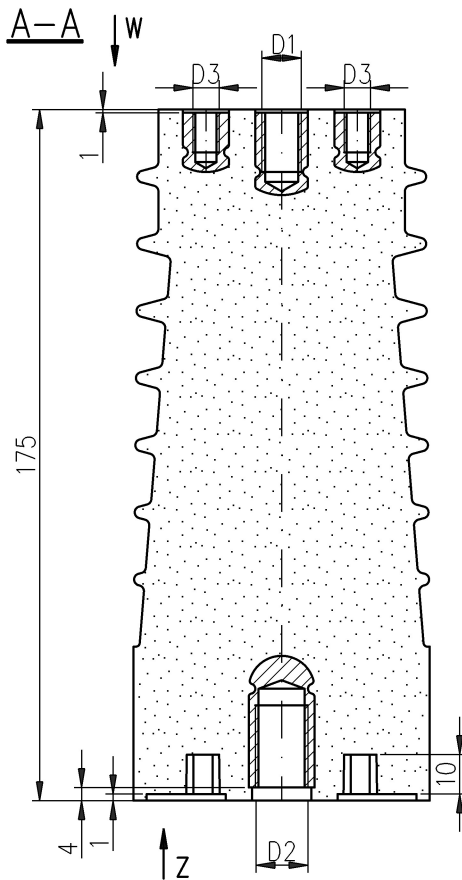
ZAKŁAD IZOLATORÓW ELEKTROTECHNICZNYCH  
BOPLAST Sp. z o.o.

Adres:

ul. B.Krzywoustego 1,  
tel. +48 59 862 01 86;  
www.boplast.pl

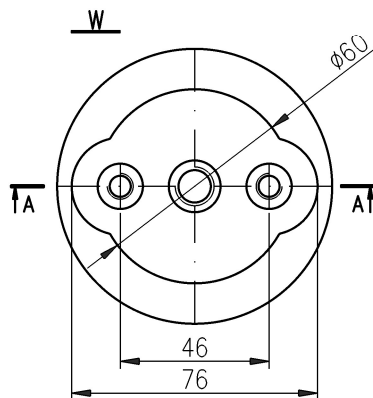
84-300 Lębork  
tel. 516 198 886  
e-mail: boplast@boplast.pl

IZOLATORY WSPORCZE \* IZOLATORY PRZEPUSTOWE \* WYROBY IZOLACYJNE \* USŁUGI

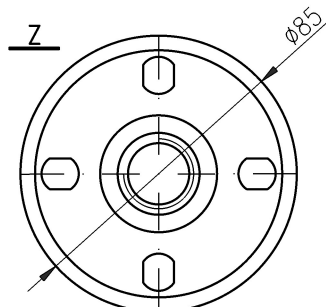


## Post insulator 17,5 kV type JO8-95.bp7

1. Insulator material:  
epoxy compound
2. Parameters according to PN-IEC 60273
3. Tested according to PN-EN 60660
4. Requirements according to GOST 1516.1-76
5. Max screw tightening torque:
  - M6 - 7 Nm
  - M8 - 20 Nm
  - M10 - 30 Nm
  - M12 - 50 Nm
  - M16 - 120 Nm
  - M20 - 120 Nm
  - M24 - 120 Nm
6. Indoor insulator
7. Possible version JOR8-95.bp7  
with capacity insert



08	M24	M20	-
07	M12	M16	M6
06	M12	M20	M10
05	M12	M16	M8
04	M12	M20	-
03	M16	M20	-
02	M12	M16	-
01	M16	M16	-
ver. dim.	D1	D2	D3



	PN	GOST
Rated insulation voltage	17,5 kV	15 kV
Lighting impulse withstand voltage	95 kV	105 kV
Dry withstand alternate voltage (50Hz, 1 min)	50 kV	-
Test alternate voltage (50Hz, 5 min)	-	55 kV
Test alternate instantaneous voltage (50Hz, 1 kV/s)	-	63 kV
Bending strength Po	8 kN	
Creepage distance	235 mm	
Weight	1,6 kg	

*Possible to make screws according to client's requirements.*