

ZAKŁAD IZOLATORÓW ELEKTROTECHNICZNYCH
BOPLAST Sp. z o.o.

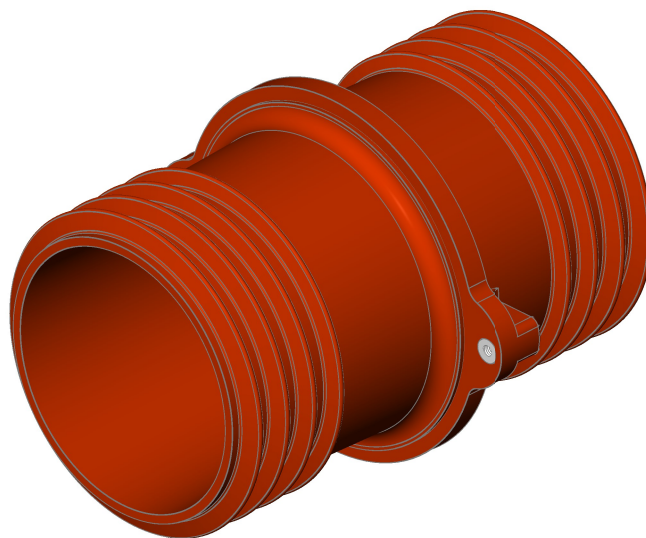
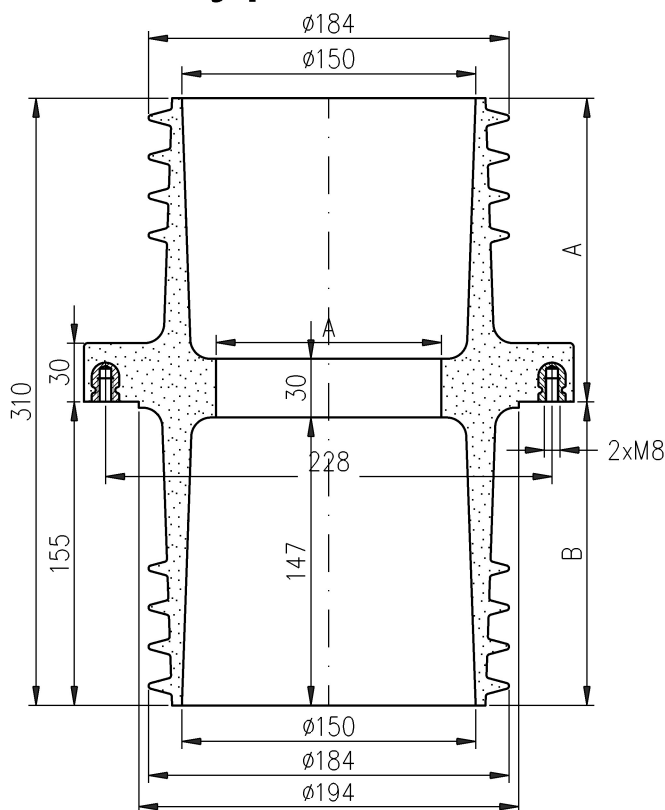
Adres:

ul. B.Krzywoustego 1,
tel. +48 59 862 01 86;
www.boplast.pl

84-300 Łęborg
tel. 516 198 886
e-mail: boplast@boplast.pl

IZOLATORY WSPORCZE * IZOLATORY PRZEPUSTOWE * WYROBY IZOLACYJNE * USŁUGI

Bushing insulator 24 kV type SPWSG.bp3-20/24/1,25



1. Insulator material:
epoxy compound
2. Voltage, temperature and short circuit requirements
according to PN-EN 60137
3. Max screw tightening torque:
- M8 - 20 Nm
4. Indoor insulator
5. Insulator designated for isolated rails

Rated insulation voltage	24 kV
Lighting impulse withstand voltage	125 kV
Dry withstand alternate voltage (50Hz, 1 min)	50 kV
Rated current	1250 A
Bending strength Po	20 kN
Creepage distance	A 250 mm B 222 mm
Weight	4,5 kg

02	Ø100
01	Ø115
ver. dim.	A

1. Insulator is mounted to subsoil (wall, partition) using two M8 screws.
2. Centricity of current rails in relation to the opening of insulator provide upper and lower inserts.
3. The inserts are fitted to insulator using two M6 screws.
4. Inserts are not included with insulator. They should be ordered separately.
5. Inserts are made according to client's specified requirements.