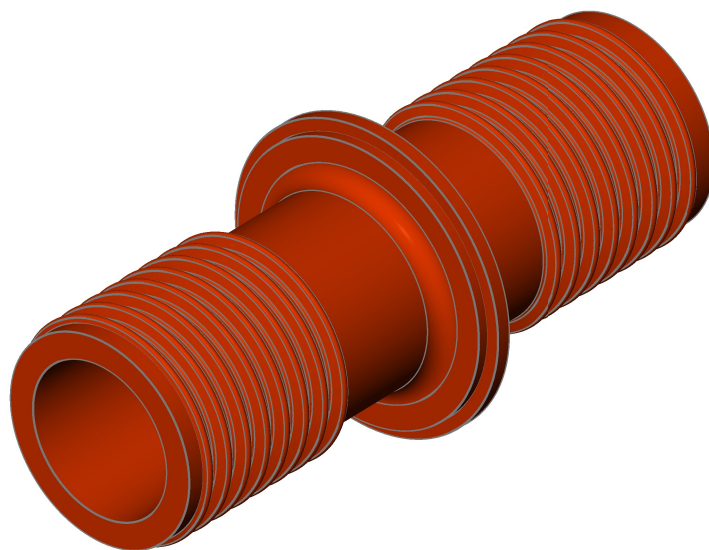
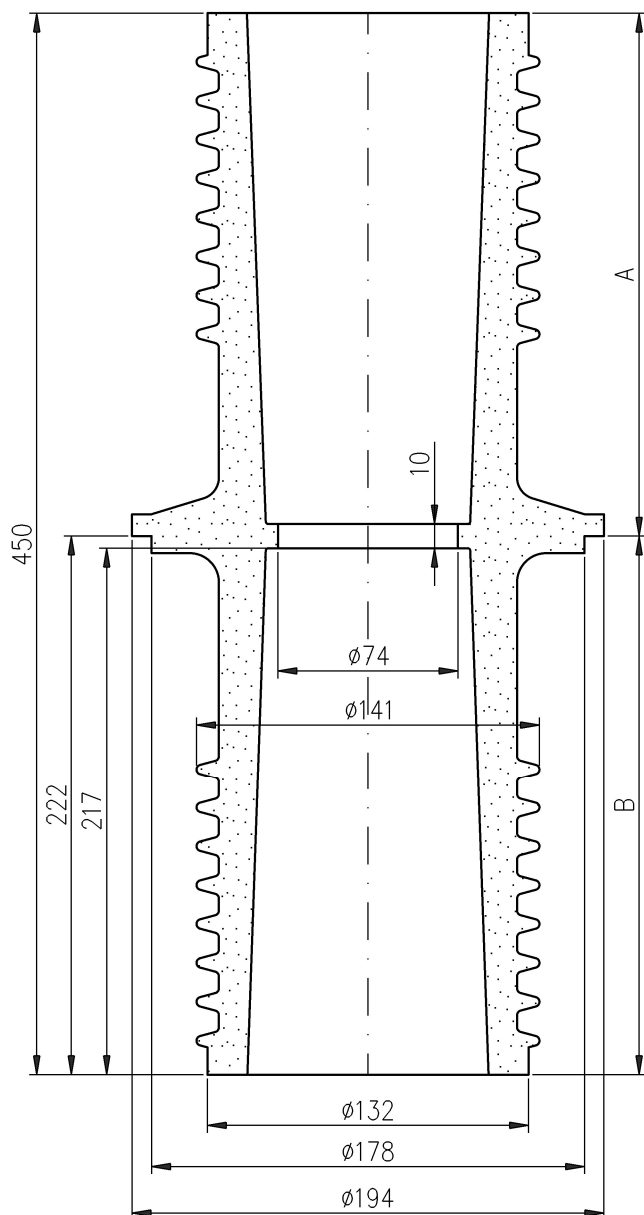


Bushing insulator 24 kV  
type SPWSG.bp1-10/24/1,25



1. Insulator material:  
epoxy compound
2. Voltage, temperature and short circuit requirements  
according to PN-EN 60137
3. Indoor insulator

Rated insulation voltage		24 kV
Lighting impulse withstand voltage		125 kV
Dry withstand alternate voltage (50Hz, 1 min)		50 kV
Rated current		1250 A
Bending strength Po		10 kN
Creepage distance	A	350 mm
	B	340 mm
Weight		5,7 kg

1. Insulator is mounted to subsoil (wall, partition) using three bushings and M12 screws.
2. Bushings are included with insulator.
3. Centricity of current rails in relation to the opening of insulator provide upper and lower inserts.
4. The inserts are fitted to insulator using two M6 screws.
5. Inserts are not included with insulator. They should be ordered separately.
6. Inserts are made according to client's specified requirements.

All data can be changed due to technological progress

DT RD2.1.035 z dnia 24.11.2006

Order example:

Bushing insulator SPWSG.bp1-10/24/1,25. Rail dimensions: 2 x (10 x 40mm).